



**b**

---

BLOOMINGTON  
SYMPHONY  
ORCHESTRA

2024–2025

*Sixty-second  
concert season*

photo by Leslie Plesser

# *Transcendent Mahler*

Sunday, April 6, 2025  
2:00 p.m.

Orchestra Hall  
1111 Nicollet Mall  
Minneapolis

---

*Manny Laureano*  
Music Director & Conductor

*Ilah Raleigh*  
Mezzo-Soprano

*Tracey Engleman*  
Soprano

Singers from  
*Angelica Encore Choral Ensemble*  
*Normandale Concert Choir*  
*Twin Cities Catholic Chorale*

---

Concert Benefactors  
*Dr. Leonard & Karen Nordstrom*  
*Allan & Deborah Schneider*  
*Martha Head*  
*William White*

# *The Program*

**Gustav Mahler**

**Symphony No. 2 in C Minor, “Resurrection”**

I. *Allegro maestoso*

A pause of a few minutes

II. *Andante moderato*

III. *In ruhig fließender Bewegung* (With quietly flowing movement)

IV. “Urlicht” (“Primal light”)

V. *Im Tempo des Scherzos* (In the tempo of the scherzo)

The last three movements are played without a break

*Ilah Raleigh, Mezzo-Soprano\**

*Tracey Engleman, Soprano\**

Singers from

*Angelica Encore Choral Ensemble*

*Normandale Concert Choir*

*Twin Cities Catholic Chorale*

*\*Soloists sponsored by William White*

Lights will be kept on during the concert to facilitate the reading of programs.  
Out of consideration for the musicians and audience members, please turn off your  
cell phone and refrain from using flash photography.

# Translations

## FOURTH MOVEMENT

### “URLICHT”

*From Des Knaben Wunderhorn*

#### Mezzo-Soprano

O Röschen rot,  
Der Mensch liegt in größter Not,  
Der Mensch liegt in größter Pein,  
Je lieber möcht' ich im Himmel sein.

Da kam ich auf einen breiten Weg,  
Da kam ein Engelein und wollt mich abweisen,  
Ach nein, ich ließ mich nicht abweisen.

Ich bin von Gott, ich will wieder zu Gott,  
Der liebe Gott wird mir ein Lichtchen geben,  
Wird leuchten mir bis in das ewig selig Leben.

## FIFTH MOVEMENT

### AUFERSTEH'N

#### Chorus and Soprano

Aufersteh'n, ja aufersteh'n wirst du,  
Mein staub, nach kurzer Ruh!  
Unsterblich Leben! Unsterblich Leben!  
Wird der dich rief dir geben.

Wieder aufzublühn wirst du gesät!  
Der Herr der Ernte geht  
Und sammelt Garben  
Uns ein, die Starben!

— Friedrich Klopstock

## FOURTH MOVEMENT

### “PRIMAL LIGHT”

*From The Youth's Magic Horn*

#### Mezzo-Soprano

O red rose,  
Man lies in deepest need,  
Man lies in deepest pain,  
Yes, I would rather be in heaven.

I came upon a broad pathway,  
An angel came and wanted to send me away,  
Ah no, I would not be sent away.

I am from God and will return to God,  
The dear God will give me a light,  
Will light me to eternal blessed life.

## FIFTH MOVEMENT

### RESURRECTION

#### Chorus and Soprano

Rise again, yes, thou shalt rise again,  
My dust, after short rest!  
Immortal life! Immortal life!  
He who called thee will grant thee.

To bloom again art thou sown!  
The Lord of the Harvest goes  
And gathers in, like sheaves,  
Us together, who died.

— Friedrich Klopstock

## FIFTH MOVEMENT (cont'd)

#### Mezzo-Soprano

O glaube, mein Herz, o glaube:  
Es geht dir nichts verloren!  
Dein ist, was du gesehnt!  
Dein, was du geliebt,  
Was du gestritten!

#### Mezzo-Soprano

O glaube,  
Du wardst nicht umsonst geboren!  
Hast nicht umsonst gelebt,  
Gelitten!

#### Soloists and Chorus

Was entstanden ist  
Das muss vergehen!  
Was vergangen, auferstehen!  
Hör' auf zu beben!  
Bereite dich zu leben!

#### Soprano and Mezzo-Soprano

O Schmerz! Du Alldurchdringer!  
Dir bin ich entrungen!  
O Tod! Du Allbezwinger!  
Nun bist du bezwungen!

#### Soloists and Chorus

Mit Flügeln, die ich mir errungen,  
In heissem Liebesstreben,  
Werd' ich entschweben  
Zum Licht, zu dem kein Aug' gedrungen!  
Sterben werd' ich, um zu leben!  
Aufersteh'n, ja aufersteh'n  
Wirst du, mein Herz, in einem Nu!  
Was du geschlagen  
Zu Gott wird es dich tragen!

— Gustav Mahler

## FIFTH MOVEMENT (cont'd)

#### Mezzo-Soprano

O believe, my heart, O believe  
Nothing is lost with thee!  
Thine is what thou hast desired,  
Thine what thou hast loved,  
What thou hast fought for!

#### Mezzo-Soprano

O believe,  
Thou wert not born in vain!  
Hast not lived in vain,  
Suffered in vain!

#### Soloists and Chorus

What has come into being  
Must perish,  
What perished must rise again.  
Cease from trembling!  
Prepare thyself to live!

#### Soprano and Mezzo-Soprano

O pain, thou piercer of all things,  
From thee have I been wrested!  
O Death, thou masterer of all things,  
Now art thou mastered!

#### Soloists and Chorus

With wings which I have won me,  
In love's fierce striving,  
I shall soar upwards  
To the light to which no eye has soared!  
I shall die, to live!  
Rise again, yes thou wilt rise again,  
My heart, in the twinkling of an eye!  
What thou hast fought for  
Shall lead thee to God!

— Gustav Mahler

# Program Notes

by Manny Laureano and Gustav Mahler

After **Gustav Mahler** (1860–1911) composed this first of three immense symphonies (among his others) which include choral portions (the Second, Third, and Eighth), he would remark that this “Resurrection” Symphony would be “a world unto itself.” Truly, the addition of voices to this work lends a sense of humanity which speaks to most listeners. The grinding pathos of the first movement, the fairytale quality of the second, and the whimsical nature of the third seem to recall our own lived experiences, some more dramatic than others. It is the solemnity of the fourth movement, “Urlicht” (“Primeval Light”), that reopens the door to a seriousness he asks the conductor to establish at the beginning of the opening movement. But it is the massive descent into a musical wilderness that seals the deal as the orchestral forces are asked to play in the manner of a chorus singing. Not content with the attempt at such imitation, Mahler quietly asks the chorus to beckon our hero, the Titan from the first symphony, to arise from the ashes of his grave to witness with us this trembling moment.

Let us hear from the composer himself after being asked to give his most intimate thoughts regarding this world he has created:

## **First Movement: Allegro maestoso**

“We are standing near the grave of a well loved man. His whole life, his struggles, his sufferings and his accomplishments on earth pass before us. And now, in this solemn and deeply stirring moment, when the confusion and distractions of everyday life are lifted like a hood from our eyes, a voice of awe-inspiring solemnity chills our heart, a voice that, blinded by the mirage of everyday life, we usually ignore: “What next?” it says. “What is life and what is death? Will we live on eternally? Is it all an empty dream or do our life and death have a meaning?” And we must answer this question, if we are to go on living. The next three movements are conceived as intermezzi.

## **Second Movement: Andante**

“A blissful moment in the dear departed’s life and a sad recollection of his youth and lost innocence.”

## **Third Movement: Scherzo**

A spirit of disbelief and negation has seized him. He is bewildered by the bustle of appearances and he loses his perception of childhood and the profound strength that love alone can give. He despairs both of himself and of God. The world and life begin to seem unreal. Utter disgust for every form of existence and evolution seizes him in an iron grasp, torments him until he utters a cry of despair.

## **Fourth Movement: Alto solo. ‘Urlicht’ (‘Primeval Light’) — from the *Knaben Wunderhorn***

The stirring words of simple faith sound in his ears: “I come from God and I will return to God!”

## **Fifth Movement: Aufersteh’n**

Once more we must confront terrifying questions, and the atmosphere is the same as at the end of the third movement. The voice of the Caller is heard. The end of every living thing has come, the last judgment is at hand and the horror of the day of days has come upon us. The earth trembles, the graves burst open, the dead arise and march forth in endless procession. The great and the small of this earth, the kings and the beggars, the just and the godless all press forward. The cry for mercy and forgiveness sounds fearful in our ears. The wailing becomes gradually more terrible. Our senses desert us, all consciousness dies as the Eternal Judge approaches. The last trump sounds; the trumpets of the Apocalypse ring out. In the eerie silence that follows, we can just barely make out a distant nightingale, a last tremulous echo of earthly life. The gentle sound of a chorus of saints and heavenly hosts is then heard: “Rise again, yes, rise again thou wilt!” Then God in all His glory comes into sight. A wondrous light strikes us to the heart. All is quiet and blissful. Lo and behold: there is no judgment, no sinners, no just men, no great and no small; there is no punishment and no reward. A feeling of overwhelming love fills us with blissful knowledge and illuminates our existence.”

— **Gustav Mahler, Dresden 1901**



# Featured Performers

Photo by Dawn Anderson



Manny Laureano  
Music Director & Conductor

The Bloomington Symphony appointed **Manny Laureano** the Artistic Director and Conductor in April 2013. Laureano has worked with a variety of ensembles, ranging in roles from the Music Director of the Calhoun-Isles Community Band in Minneapolis, and Music Director of the Metropolitan Symphony Orchestra, to several appearances in Young People's Concerts with the Minnesota Orchestra. He has been in demand as a clinician for youth orchestras and bands throughout the state of Minnesota.

In 2002, Manny and his wife Claudette, were invited to guest conduct the National Suzuki Youth Orchestra Festival Orchestra and were invited to serve again in 2004. Manny served as Co-Artistic Director of the Minnesota Youth Symphonies (MYS) from 1988-2020. Laureano served as Assistant Conductor of the Minnesota Orchestra during the 2005-06 season and served as conductor of the 2008-09 Minnesota All-State Orchestra.

Manny was the conductor for concerts given by Musicians of the Minnesota Orchestra at Lake Harriet and various Twin Cities high schools, as well as for a Young Person's Concert for inner city youth in North Minneapolis under the auspices of the ACME/El Sistema program. He has guest-conducted at the Eastern Music Festival, Indiana University, St. Olaf College, and the University of Wisconsin at River Falls, among other places. Manny is also in demand as a guest conductor of community orchestras and clinician for school ensembles all over the Twin Cities metropolitan area.

Manny and Claudette live in Plymouth, Minnesota.

Chris Hewitt of the Star Tribune described **Ilah Raleigh** as "singing with dignity, beauty and power." Ilah Raleigh, Ed.D., is a performing artist, arts education leader, and writer. Her credits include opera productions with Washington National Opera, Wolf Trap Opera, Minnesota Opera, and concerts with the Orlando Philharmonic, MacPhail Spotlight Series, and An die Musik Live! concert series.

Dr. Raleigh's passion for arts education and commitment to equity are evident in her work in community education, PreK-12 education, and higher education. She holds an Ed.D. from the University of St. Thomas, M.Mus. from the Peabody Institute of Johns Hopkins University, and a B.A. in Italian Studies (Phi Beta Kappa) from the University of Minnesota. She serves as the PK-12 Director of Visual and Performing Arts at The Blake School. She is currently writing a general interest book on reggaetón to be published in Fall 2026.

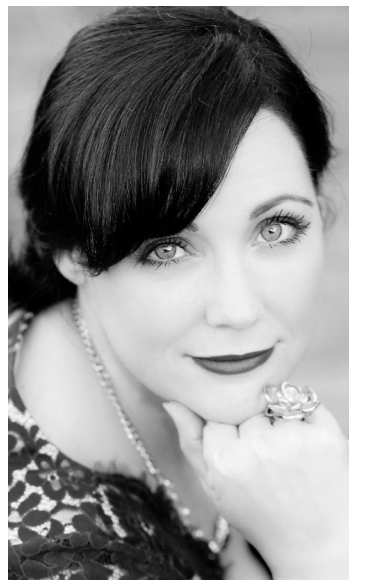
To learn more about Dr. Raleigh's professional activities, please visit [www.ilahraleigh.com](http://www.ilahraleigh.com)



Ilah Raleigh  
Mezzo-Soprano

A recipient of the McKnight Artist Fellowship for Musicians, **Tracey Engleman** has performed operatic roles with the Minnesota Opera, Minnesota Concert Opera, Skylark Opera, An Opera Theater, Journey North Opera, Music by the Lake, and the Los Angeles Philharmonic.

As a concert artist, Engleman has performed more than 40 major oratorio works with regional organizations including the La Crosse Symphony Orchestra, Milwaukee Bel Canto Chorus, the Valley Chamber Choral, Rochester Symphony Orchestra, and the Wayzata Symphony. As a contemporary classical music specialist, Ms. Engleman has performed chamber music with Zeitgeist, the Chicago Chamber Musicians, the Tanglewood Music Center, and the Boston Symphony. Her CD, *Lift me into Heaven Slowly*, featuring song cycles by Libby Larsen was released by Innova Records in 2017. Ms. Engleman teaches voice and pedagogy at St. Olaf College.



Tracey Engleman  
Soprano

# Featured Performers

(continued)

## ANGELICA ENCORE CHORAL ENSEMBLE

Angelica Encore Choral Ensemble is a mixed voice, auditioned community choir providing a continuing choral experience for ACYC alumni as well as musicians throughout the Twin Cities since 2011. Encore strives to illuminate an individual's life-long connection to singing and is committed to continuing the high choral standards set forth by the Angelica Cantanti youth ensembles.

Based in Bloomington, Minnesota, Encore performs exciting and meaningful repertoire including classical, multi-cultural, and contemporary genres, both sacred and secular. Rehearsals are upbeat and energizing as singers are challenged to grow musically in a fun, welcoming environment.

## NORMANDALE CONCERT CHOIR

Normandale's Concert Choir is a mixed-voiced, auditioned ensemble open to all singers who want to maintain and expand their vocal abilities by singing choral literature from a diversity of historical periods, styles, and localities. Each year an extended-length masterwork, such as an 18th or 19th century mass, is studied and performed. Dr. Jaros' training in ethnomusicology informs his selection of works from global cultures as well. In addition to local and regional tours, the Concert Choir has performed at Minnesota ACDA events and New York's Carnegie Hall.

## TWIN CITIES CATHOLIC CHORALE

The Twin Cities Catholic Chorale was founded in 1956 by Monsignor Richard J. Schuler and has been singing at the Church of St. Agnes, an architectural and acoustical gem, since 1974. The 40-voice Chorale performs 18th- and 19th-century masses with orchestral accompaniment, sung as an integral part of the liturgy as the composers had intended, at the Sunday Latin High Mass from October-May. Four professional vocal soloists and a professional orchestra perform with the Chorale weekly.

**Nancy Grundahl** has been a part of the Angelica organization since 1993, retiring in 2017 from conducting the Angelica Concert Choir. She has continued with Angelica Encore since 2011. She is a conductor, composer, and soloist and holds vocal performance degrees from St. Olaf College and the University of Minnesota. Nancy retired as the conductor of the Riverside Singers at Augsburg University in 2019 and is the Director of Music at Creekside UCC (formerly Mayflower UCC) in Minneapolis. Nancy's arrangements and compositions for solo voice and choirs have been published and are sung across the country. Her new social justice cantata *Bending the Arc* was premiered two years ago at Creekside UCC. She has been an adjudicator, clinician, soloist, and guest conductor. In 2019, Nancy became the recipient of the prestigious F. Melius Christiansen Lifetime Achievement Award from the American Choral Directors Association of Minnesota, which recognizes individuals for their outstanding contributions, noteworthy servant leadership, and promotion of choral music within their communities and throughout the state of Minnesota.



Nancy Grundahl  
Conductor

**Marc D. Jaros** holds the BA degree from St. John's University, the MM from the University of Wisconsin-Madison, and the PhD in Music from the University of Minnesota-Twin Cities. He is the Music Director of the Twin Cities Catholic Chorale, a 40-voice chorus that performs 18th- and 19th-century concerted orchestral masses at the Church of St. Agnes in St. Paul. Dr. Jaros is a member of the American Choral Director's Association. He has been a member of the music faculty at Normandale since 1996 and currently serves as Department Chair.



Marc Jaros  
Conductor

# Bloomington Symphony Orchestra

## *Violin I*

Michael Sutton  
Concertmaster  
*John Wiggins Memorial Chair*  
Jennifer Volby  
Associate Principal  
Kelly Carter  
Associate Principal  
Suzanne Damberg+  
Deonne Gray  
Hanna Landrum+  
Erik Lange  
Lori Pommer  
Renee Rasmussen  
Karen Thomas  
Jon West  
Theresa Wise  
Heidi Wojahn+

## *Violin II*

John Holm  
Principal  
Kiana Welsch  
Assistant Principal  
Emily Anderson  
Karen Bottge  
Jenna Carr  
Akiko Durbin  
Nehemiah Harrington+  
Rachel Masters+  
Thomas O'Keefe+  
Brenda Ruberto  
Ing-Mari Gahr Ryan  
Barbara Whiteman-Brown

## *Viola*

Chris Chelgren  
Principal  
*Violin Guild Chair*  
Sarah Oxendale  
Associate Principal  
Jon Poupore  
Assistant Principal  
Will Bartruff  
Chuck Clay  
Hilary Sackett Crosbie  
Rolf Krogstad  
Teresa Mager+  
Thomas Plante  
Will Schatz  
Julia Wells

## *Cello*

Laurie Maiser  
Principal  
*Dorothy & Don Hodapp Chair*  
Daniel Ericksen  
Associate Principal  
*Sylvia Pickett Memorial Chair*  
Greg Marget  
Assistant Principal  
*Kristin Reller Memorial Chair*  
Jane Amundson  
Katherine Canon  
Matthew Cummins  
*George E. Harding Memorial Chair*  
Matthew Maxam  
Tom Niemisto  
Alex Steil  
Scott Zeltinger

## *Bass*

Charles Kreitzer  
Principal  
John Bulger  
Associate Principal  
Gary Hede  
Beatrice Hammel+  
Miranda Morgan Lilla  
Thomas Pieper  
Rahn Yanest+

## *Harp*

Elisa Schiller  
Cathy Victorsen+

## *Organ*

Franco Holder+

## *Flute & Piccolo*

Charlotte Bartholomew  
Principal  
*Ruth Giles Chair*  
Jeeyoun Kang  
Bianca Najera  
Leslie Pietila+

## *Oboe*

Megan Werner  
Principal  
Garrett O'Connell  
Alexis Varghese+  
Emily Exline+

## *English horn*

Alexis Varghese+  
Emily Exline+

## *Clarinet*

Karen Hansen Gurstelle  
Principal  
*Marjorie Hansen Chair*  
Jan Scholl  
Laila Stainbrook  
*Karen Hansen Gurstelle Chair*  
Claire Zwiefelhofer+

## *Bass Clarinet*

Claire Zwiefelhofer+

## *E-flat clarinet*

Simon Plum+  
Jan Scholl+

## *Bassoon*

Briana O'Connell  
Principal  
Nancy Jacobson  
Cassandra Roaché+  
Nick Ober+

## *Contrabassoon*

Nick Ober+

## *Horn*

Rebecca Jyrkas  
Principal  
*Roger and Doreen Klages Chair*  
Melanie Ditter  
Aisling O'Sullivan Goel  
Annie Ausen  
Jeffrey A. Ohlmann+  
Emily Helland+  
Melissa Medina Palomo+  
Karen Prescott+  
Kristen Haug+  
Emmeline Liske+

## *Trumpet*

Brad Shermock  
Principal  
*Allan & Debby Schneider Chair*  
Steven Garcia  
Ben Alle+  
Chris Houser  
Josh Cameron+  
Hollyn Fellows+  
Joe Hazlett+  
Takako Senn+

## *Trombone*

John Metcalfe  
Principal  
Brian Wistrom+  
Bob Jacob+

## *Bass Trombone*

Gary Zielinski

## *Tuba*

Michael Werner  
Principal

## *Timpani*

Trevor Haining  
Kat Felicis loco+

## *Percussion*

Nate Haar  
Julie Henry+  
Nathan Orcutt  
Greg Wood

## *Music Director*

Manny Laureano  
*Dr. Leonard & Karen Nordstrom  
Chair*

## *Executive Director*

Sara Kleinsasser Tan

## *Personnel Coordinator & Librarian*

Jon Poupore

## *Production Coordinator*

Becky Jyrkas

## *Stage Technician*

Chuck Clay

## *Student Intern*

Sophie Gunyan

## *Board of Directors*

Julia Wells President  
Kate Croatt, Vice President  
Patricia J. Reller, Treasurer  
Megan Werner, Secretary  
Will Bartruff  
Brianna Butler  
Rolf Krogstad  
Matthew Maxam  
Theresa Wise  
Manny Laureano, ex-officio  
Sara Kleinsasser Tan, ex-officio

String section players are listed in alphabetical order. String section personnel, with the exception of titled players, rotate on a per-concert basis.

+ substitute player



# Chorus

## *Soprano*

Beth Anderson  
Kylie Borchard  
Karen Dekker  
Julie Finn  
Karin Fisher  
Caroline Flaten  
Lana Fuentes  
Nancy Grundahl  
Annie Gueningsman  
Grace Hermer  
Maya Hilten  
Zahra Islam  
Veronica Jacobs  
Susanna Jacobs  
Joanna Jacobs  
Zavieanna Johnson  
Kylie Krick  
Bobbi Krippner  
Annika Lackner  
Gabriela Leovan  
Sarah Lindsay  
Jessica Shultz  
Tao Song  
Betsey Temple  
Savanna Vance  
Aajaylah Whitfield  
Jamilyah Whitfield  
Rena Williams

## *Alto*

Grace Becker  
Avery Cracauer  
Linda Fletcher  
Sophia Gambiana  
Megan Hanelitz  
Kristina Ignatenkova

Bridget King  
Annette Krohg  
Nissa Kuchenmeister  
Annie Kuchenmeister  
Autumn Loven  
Ana Medina Lima  
Carolyn McCardell  
Ryder Moyer  
Jen Randolph Reise  
Annabell Schreier  
Penny Tower  
Anastasya Viktoria  
Olivia Walsh  
Dina Williams

## *Tenor*

Logan Barat  
Steven Baumgartner  
Steve Clark  
John DeCausmeaker  
Esau Estrada Martinez  
Nick Forlitti  
Steve Fusselman  
Nathan Gleason  
Nick Green  
Jeffrey Hentges  
Jeffrey Judge  
Dan Kibat  
Jim Kromhout  
Jesse Navarro Vasquez  
Matt Norman  
Cameron Pegan  
Laura Pride  
Mark Sauer  
Tom Stierman  
Scott Tower  
Kenji Taylor

## *Baritone/Bass*

Nick Baker  
Zach Bandt  
Steve Berg  
Jim Bird  
Mark Borchardt  
Austin Carreon  
Ben Clark  
Parker Dietz  
Charlie Dobihal  
Jace Dovolis  
Tom Freudenstein  
Steve Grundahl  
John Hadfield  
Benjamin Hersey  
Taylor Huwe  
Marc Jaros  
Noah Jenkins  
Luke Jerviss  
Gary Johnson  
James Johnson  
Lucas Kramer  
Jack Kreiser  
Paul Krohg  
Seth Menning  
Karl Narveson  
David Peterson  
Austin Shannon  
Marty Spicer  
Brian Thompson  
Rick Wagner  
Dan Waller  
Stephen Waller

# Acknowledgments

We gratefully acknowledge our concert benefactors, Dr. Leonard & Karen Nordstrom, and Allan & Deborah Schneider. These donors have been supporting the Bloomington Symphony Orchestra and the arts in Bloomington for decades. We are grateful for their impact and encouragement.

We give a special thanks to Martha Head and an anonymous donor whose generous gifts are supporting the rental of the special instruments onstage, including the organ and the set of bells that are being used in today's concert.

William White has given a generous gift to underwrite the outstanding soloists you will hear at today's concert.

Thank you to the Greater Twin Cities Youth Symphonies (GTCYS) for renting a portion of their percussion equipment for this concert.

Thank you to Jane Bishop, Jane VeVea, Dan Lenort, and the staff at Christ the King Lutheran Church for hosting our weekly rehearsals.

Darrell Owens of Darrell Owens Photography has been documenting the rehearsal and performance process for this piece. Thank you to Darrell for capturing the BSO in this wonderful performance which you can find on our social media and website.

Thank you to the staff of the Minnesota Orchestra and Orchestra Hall, especially Sarah Flake, Nick Peter, Saffron Fletcher, for making us feel welcome and treating us like stars!





# Donors

## Over \$10000

City of Bloomington Arts Grant  
Dr. Leonard & Karen Nordstrom  
Allan & Deborah Schneider

## \$5000 - \$9999

Thomas Kemp Foundation

## \$2500 - \$4999

Anonymous  
Dorothy & Don Hodapp  
Martha Head  
Pete & Laurie Maiser  
William White  
Julia & Bruce Wiessner

## \$1000 - \$2499

Bloomington Noon Rotary  
Foundation  
Beverly Chadwick  
David & Joy Drummond  
Tim & Rebecca Jyrkas  
Roger & Doreen Klages  
Manny & Claudette Laureano  
Joan Meyer  
*in memory of Forrest Meyer*  
Stiles Foundation  
Greg Wood

## \$500 - \$999

Mark Adkins  
Karin Belsheim  
*in memory of Forest Meyer*  
John & Brianna Butler  
Cavitt Productions #  
Kate & Charles Croatt  
Tom & Barbara Cummins  
The Estate of Jerome Dahlberg  
Marjorie C. Hansen  
Anne Hintermeister  
Rolf & Marta Krogstad  
Lori Pommer  
*in loving memory of John Wiggins*  
Patricia & Donald Reller  
*in memory of Kristin Reller*  
John & Anne Schoenhard

David & Jill Schatz  
Kevin & Sara Tan  
United Healthgroup  
James & Theresa Wise

## \$150 - \$499

Emily Anderson  
Ann Ausen  
Clair & Chase Bernard  
Karen & Brian Bottge  
Ariel Buehler  
John Bulger  
Katherine Canon  
Jenna Carr  
Carter Music  
Chris Chelgren  
Charles & Darlene Clay  
Glenn Corliss  
Matt Cummins  
Melanie Ditter  
Akiko & Sam Durbin  
Daniel Ericksen  
Fat Pants Brewing, LLC  
Steven Garcia  
Deonne & Charles Gray  
Julie Gudmestad  
Amy Gudmestad  
Karen Hansen  
Gary Hede  
Mary Beth Hill  
*in memory of David Jones*  
Doug & Judy Hoagland  
Matt Hoffner  
JC & John Holm  
Chris Houser  
Conrad Hultquist  
Nancy Jacobson  
Frank & Roxy Janezich Foundation  
Glenn & Sharon Kleinsasser  
Charles Kreitzer  
Erik Lange  
Susan Maples  
Matthew Maxam  
Janet & John Metcalfe  
Gemma Miller  
*in memory of Greg Granum*

Miranda Morgan Lilla  
Bianca Najera  
Tom Niemisto  
Dabbie Noack  
Charles & Ruth Oliver  
*in loving memory of Wayne & Caryl  
Markel*  
PK Opstad  
Amy Oriani  
Barbara Osadcky  
Aisling O'Sullivan Goel  
Sarah Oxendale  
Tom Pieper  
Nellie Ponarol  
Gloria Pope  
Jon Poupore  
Renee Rasmussen  
Milana Reiche  
Brenda Ruberto  
Ing-Mari Gahr Ryan  
William Schatz  
Elisa Schiller  
Sports Page Bar & Grill  
Laila Stainbrook  
Alexander Steil  
Michael Sutton #  
Karen Thomas  
Julia Wells  
Seth Moran & Elisa Wells  
*in honor of Julia Wells*  
Megan & Michael Werner  
Lance & Janet Werner  
Jon West  
Barbara Whiteman Brown  
Gary Zielinski

## Up to \$149

Anonymous  
Steve & Jane Amundson  
Martha Mitchell Anderson  
Shelby Andress  
Sofia Ardalan  
William Bartruff  
Charlotte Bartholomew #  
Geraldine Beckmann  
*in memory of Forrest Meyer*

Annie Brown  
Susan Byrne  
Peter Chang  
James & Laurie Cory  
Charles Ditter  
Kris Dvorak  
Linda Fletcher  
Charities Aid Foundation America  
Deborah Gartenberg  
Mark Gitch  
*in memory of George Chlebeczek*  
Don & Elizabeth Heinzman  
Cynthia Jacobson  
Jeeyoun Kang  
Tim & Cynthia Truitt Lynch  
*in memory of Forest Meyer*  
Skaidrite C. Moates  
*in appreciation of the orchestra*  
Paul & Karla Niederberger  
Patrice Pakiz  
Kristin Parker  
Lori Pommer  
*in memory of James Chlebeczek*  
Pamela Pommer  
*in memory of John Wiggins*  
Hilary Sackett Crosbie  
Larry & Roz Schack Giving Fund  
Laura Schultz  
Ruth Smestad Anglin  
*in memory of Helene Anglin*  
*in honor of Brad Shermock*  
Peter Stephan  
Kay Talbot  
*in honor of Lori Pommer*  
Neil Trainor  
Janet Weivoda  
Lyndon & Diane West  
Xcel Energy Foundation  
Joanne Zachow

# in-kind donation

This listing is believed to correctly reflect  
donors between March 15, 2024 and March  
15, 2025.

Contact our office with any corrections.

# Donate Today!

Your financial donation helps the Bloomington Symphony Orchestra be the vibrant and creative ensemble it is: in demand by volunteer musicians and affordable for audience members. Please consider giving today to support the excellence, collaboration, and dedication you see onstage.

Donations help us rent and purchase music and instruments, cover guest artist fees, pay for rehearsal and concert venues, and more. We value every contribution and use it carefully to produce these high-quality concerts.

You can give in these three easy ways:

**Check:** Send a check to our office address.

**Scan the QR codes:** Give directly through PayPal or Venmo now



Donate by PayPal



Donate by Venmo

## Operating Fund

Every dollar raised goes to creating the music you are hearing today along with all our season concerts, our free outdoor summer concerts at the Normandale Lake Bandshell, and our side-by-side performance with the Bloomington Public School string students at the Bloomington Orchestra Festival.

## Endowment Fund

In the mid-1990s, the BSO Board established an Endowment Fund which allows the group to “harvest” a percentage of earnings each year. Thanks to careful spending and generous donors, the endowment has grown significantly. Consider giving an “over and above” gift to the Endowment Fund to honor a musician or loved one which will be a legacy to the BSO for years to come.

# *Save the Dates*

## *Arts in the Park Concert*

Tuesday, July 29, 2025 — 7pm

Normandale Lake Bandshell

West 84th Street, Bloomington

## *2025-26 Concert Season*

Sunday, October 5, 2025 — 2pm

Ives Auditorium at the Minnesota Masonic Heritage Center

11411 Masonic Home Drive, Bloomington

Sunday, November 23, 2025 — 2pm

Schneider Theater at the Bloomington Center for the Arts

1800 West Old Shakopee Road, Bloomington

Sunday, February 8, 2026 — 2pm

Ives Auditorium at the Minnesota Masonic Heritage Center

11411 Masonic Home Drive, Bloomington

Sunday, April 12, 2026 — 2pm

Ives Auditorium at the Minnesota Masonic Heritage Center

11411 Masonic Home Drive, Bloomington

# *Concert Survey*

Please take a moment to complete a short online concert survey.

You can complete an online survey by scanning the QR code or visiting the website: [bit.ly/BSOSurvey2425](https://bit.ly/BSOSurvey2425)

If you prefer, you are welcome to leave comments on our Facebook page or email us at [info@bloomingtonsymphony.org](mailto:info@bloomingtonsymphony.org).

Thank you for sharing your feedback so we can improve your concert experience!



*Scan to complete  
a short survey*

*[bit.ly/BSOSurvey2425](https://bit.ly/BSOSurvey2425)*



# BLOOMINGTON SYMPHONY ORCHESTRA

## Mission

The mission of the Bloomington Symphony Orchestra is to bring music lovers and accomplished musicians together to experience inspirational performances of orchestral music, with community as our cornerstone.

## Vision

The Bloomington Symphony Orchestra will continue to be a vibrant, creative, and ever-evolving ensemble that is recognized as a leader in the Twin Cities for its accomplished volunteer musicians, capacity audiences, and an engaged community.

## Values

Since 1963, the Bloomington Symphony Orchestra has been rooted in community, with the conviction that music is vital and enriches lives.

We are guided by these values:

- Excellence
- Collaboration
- Dedication


## Inclusion


The Bloomington Symphony Orchestra believes that music is something that all people—regardless of race, ethnicity, religion, gender, age, mental or physical abilities, or economic status—can and should be able to enjoy. As an equal-opportunity organization, we welcome the unique contributions and perspectives brought by our musicians, staff, board members, audience members, community leaders, and the general public. We strive to treat all people with the respect we know they deserve.


---

## Bloomington Symphony Orchestra

1800 West Old Shakopee Road | Bloomington, MN 55431

 [bloomingtonsymphony.org](http://bloomingtonsymphony.org)

 952.563.8573

 [info@bloomingtonsymphony.org](mailto:info@bloomingtonsymphony.org)

